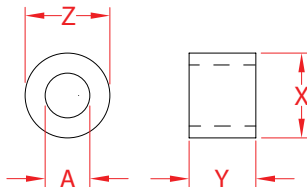
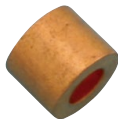


STOP SLEEVE

COPPER



Made in USA Precision Machined



ITEM	A (wire / wire mm)	HOLE #	X (height)	Y (length)	Z (width)	WT (lb)	PACKAGING TYPE	EACH (qty)	INNER (qty)	CARTON (qty)	UPC
K0754-0001	1/16" - 1.5 mm	1	0.20"	0.22"	0.20"	0.01/100	POLYBAG	1	10	1,000	791506018988
K0754-0002	3/32" - 2.5 mm	2	0.33"	0.32"	0.33"	0.8/100	POLYBAG	1	10	1,000	791506018995
K0754-0003	1/8" - 3.0 mm	3	0.33"	0.33"	0.33"	0.6/100	POLYBAG	1	10	1,000	791506019008
K0754-0004	5/32" - 4.0 mm	4	0.42"	0.33"	0.42"	0.01	POLYBAG	1	10	1,000	791506019015
K0754-0005	3/16" - 5.0 mm	5	0.42"	0.32"	0.42"	0.01	POLYBAG	1	10	500	791506019022
K0754-0006	7/32" - 5.5 mm	N/A	0.43"	0.63"	0.43"	0.02	POLYBAG	1	10	500	791506019039
K0754-0007	1/4" - 6.0 mm	1	0.66"	0.71"	0.66"	0.06	POLYBAG	1	10	500	791506019046
K0754-0009	5/16" - 8.0 mm	N/A	0.66"	0.71"	0.66"	0.05	POLYBAG	1	5	200	791506019053
K0754-0010	3/8" - 9.0 mm	N/A	0.66"	0.71"	0.66"	0.04	POLYBAG	1	5	100	791506019060

NOTE:
FOR 1/16" - 1/8", USE E0113-0350. FOR 1/16" - 3/16", USE E0113-0600. FOR 1/4" USE E0113-0700. USE A HYDRAULIC SWAGER ON LARGER SIZES.
ALL DIMENSIONS ARE NOMINAL (+/- 3%) AND ARE SUBJECT TO CHANGE WITHOUT NOTICE.